

Chapter 2: Preparation and Administration

**Do not open the vial trays or remove vials
until you are ready for thawing or use**



0:56

/

11:03



- **Do not open the vial trays or remove vials until you are ready for thawing or use**
- Closed-lid vial trays containing 195 vials removed from frozen storage ($< -60^{\circ}\text{C}$) may be at room temperature ($< 25^{\circ}\text{C}$) for up to 5 minutes for transfer between ultra-low-temperature environments
- When you are ready to thaw or use the vaccine
 - Open-lid vial trays, or vial trays containing less than 195 vials removed from frozen storage ($< -60^{\circ}\text{C}$) may be at room temperature ($< 25^{\circ}\text{C}$) for up to **3 minutes**
 - After vial trays are returned to frozen storage following room temperature exposure, they must remain in frozen storage for at least **2 hours** before they can be removed again
- Once an individual vial is removed from a vial tray at room temperature, it should not be returned to frozen storage and should be thawed for use

Ancillary supplies will be packaged in kits and will be automatically ordered in amounts to match vaccine orders in VTrckS.

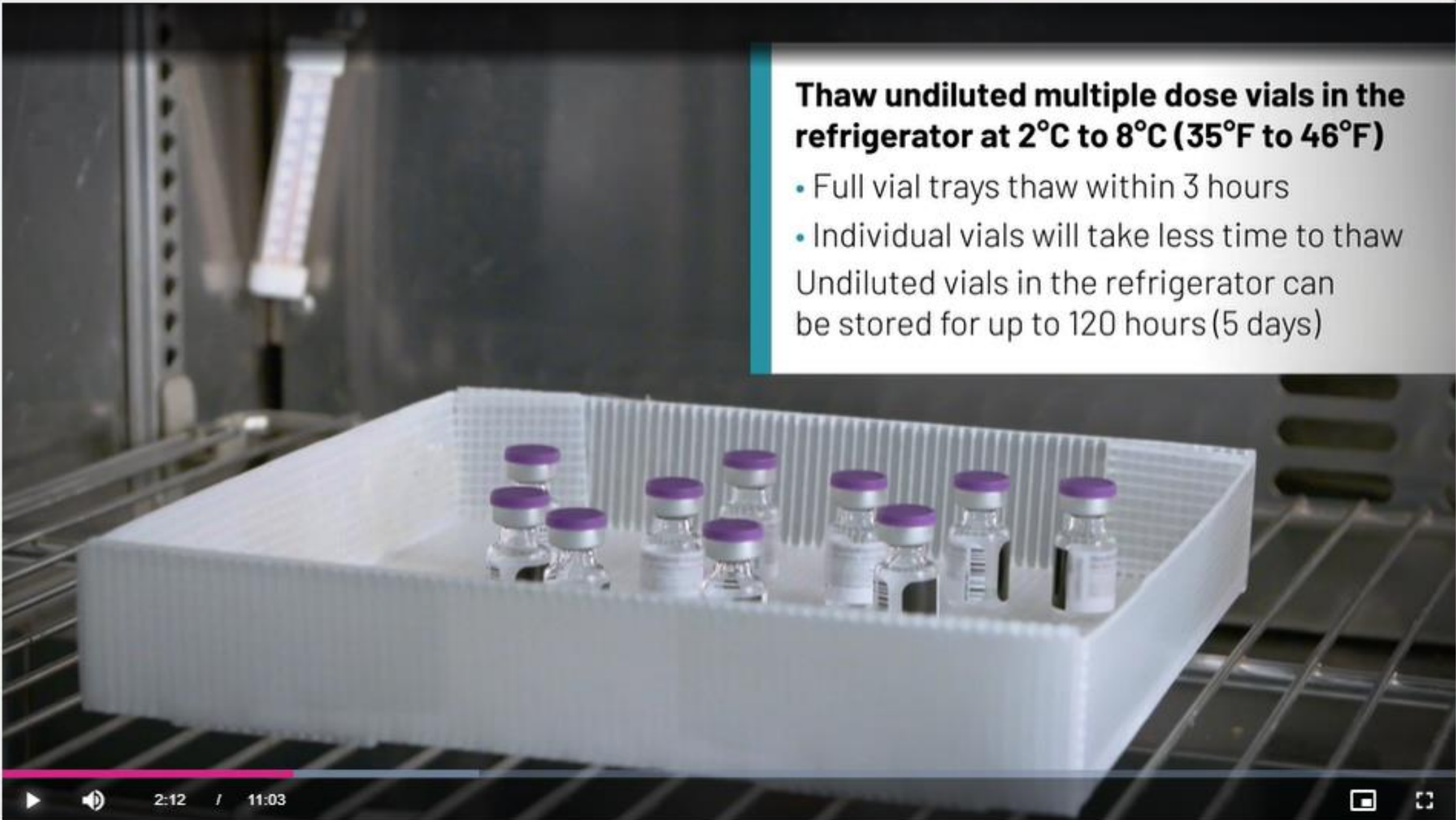
- A. For centrally distributed vaccines, each kit will contain supplies to administer 100 doses of vaccine, including:
- Needles, 105 per kit (various sizes for the population served by the ordering vaccination provider)
 - 25-gauge, 1" (if vaccination indicated for pediatric population)
 - 22–25-gauge, 1-1.5" (adult)
 - Syringes, 105 per kit (ranging from 1–3 mL)
 - Alcohol prep pads, 210 per kit
 - 4 surgical masks and 2 face shields for vaccinators per kit
 - COVID-19 vaccination record cards for vaccine recipients, 100 per kit
 - Vaccine [needle guide](#) detailing the appropriate length/gauge for injections based on route, age (for children), gender, and weight (for adults)

If a COVID-19 vaccine that requires mixing with diluent is ordered and shipped from CDC's centralized distributor, a mixing kit that includes the necessary needles, syringes, and alcohol prep pads will also be automatically added to the order. For centrally distributed vaccines, providers will have the option to submit the order in a way that opts out of receiving the administration and mixing kits.

- B. For vaccines that are shipped directly from the manufacturer, a combined kit will be included. This combined kit will include administration supplies (as noted above), mixing supplies, and vials of diluent to prepare the vaccine for use. Because it contains diluent, providers will not have the option to opt out of requesting this combined ancillary kit.

Ancillary supply kits will not include sharps containers, gloves, and bandages. Additional personal protective equipment (PPE) may be needed depending on vaccination provider site needs.

Facilities ordering outside of their jurisdiction's allocation (i.e., commercial and federal entities with federal MOUs in place) will order directly from CDC, and CDC will be responsible for approval of those orders.



Thaw undiluted multiple dose vials in the refrigerator at 2°C to 8°C (35°F to 46°F)

- Full vial trays thaw within 3 hours
 - Individual vials will take less time to thaw
- Undiluted vials in the refrigerator can be stored for up to 120 hours (5 days)



2:12 / 11:03



Vials may also be thawed for
30 minutes at room temperature
(up to 25°C [77°F])



2:22 / 11:03



Dilute within
2 hours of thawing

OR

Place in the
refrigerator



2:38 / 11:03



Avoid exposure to:

Direct
sunlight

Ultraviolet
light



2:54

/

11:03





Invert the vial
10 times to mix

DO NOT SHAKE



3:25

/

11:03





Use 0.9% sodium chloride.
Do not use bacteriostatic saline

1.8 mL of 0.9% Sodium Chloride Injection, USP

- One 3 mL or 5 mL syringe
- 21-gauge needle

Inject Sodium Chloride slowly, down the side of the vial. Pull back plunger fully to relieve pressure in the vial after injecting Sodium Chloride.



Be mindful of guidance on precautions to prevent unintended exposure

The biggest risk for unintended exposure is through openings in the skin from a cut or needlestick and mucous membrane exposure from aerosolization

This is most likely to occur when diluting the vial for dosing or withdrawing the needle from the vial

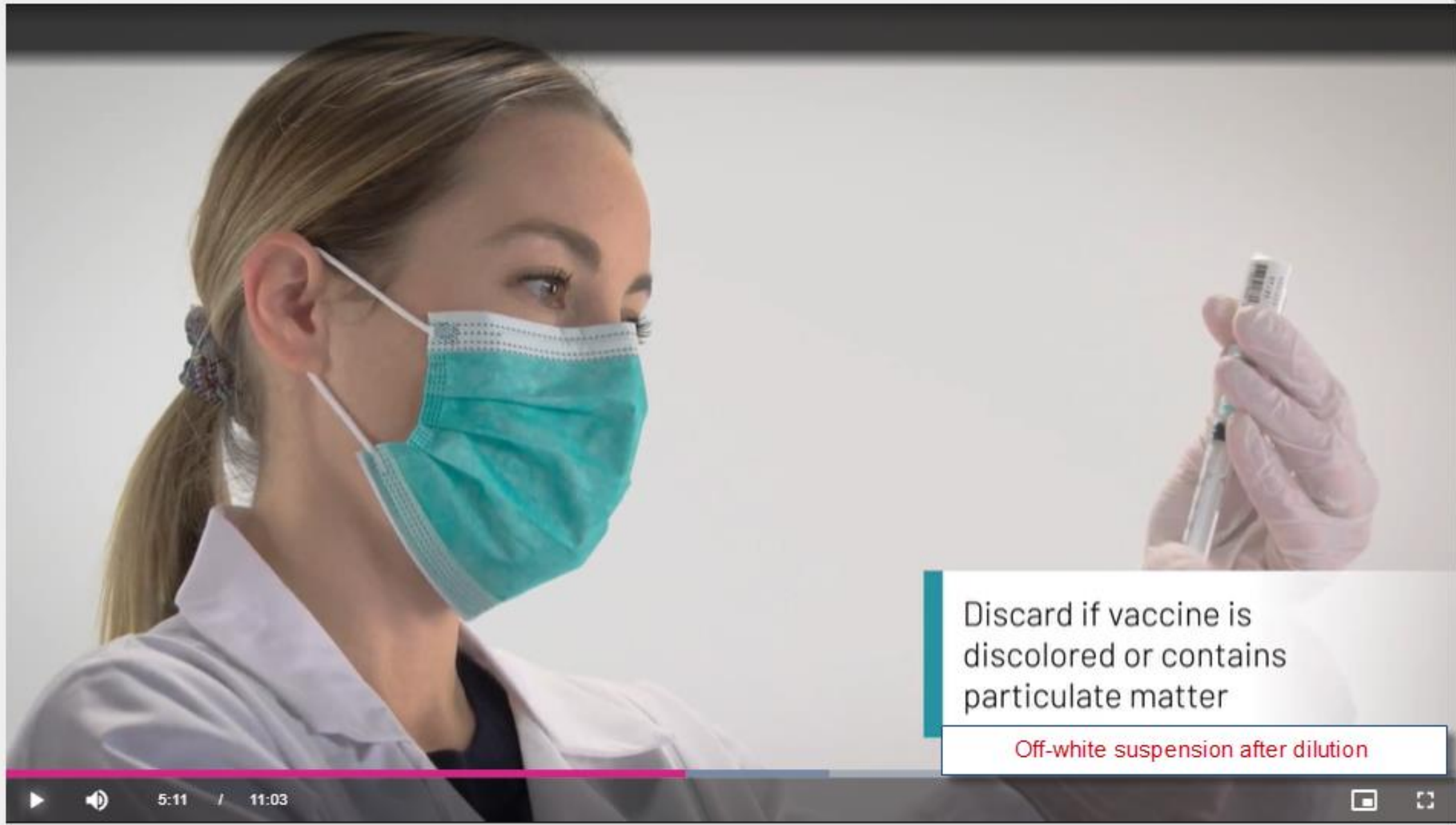


4:45



11:03





Discard if vaccine is discolored or contains particulate matter

Off-white suspension after dilution


- Store between 2°C to 25°C (35°F to 77°F)
- Diluted vaccine solution should be used within 6 hours from the time of dilution. If not used within 6 hours, it should be discarded



5:53

/ 11:03





Prepare individual
0.3 mL doses from the
diluted vaccine



6:09

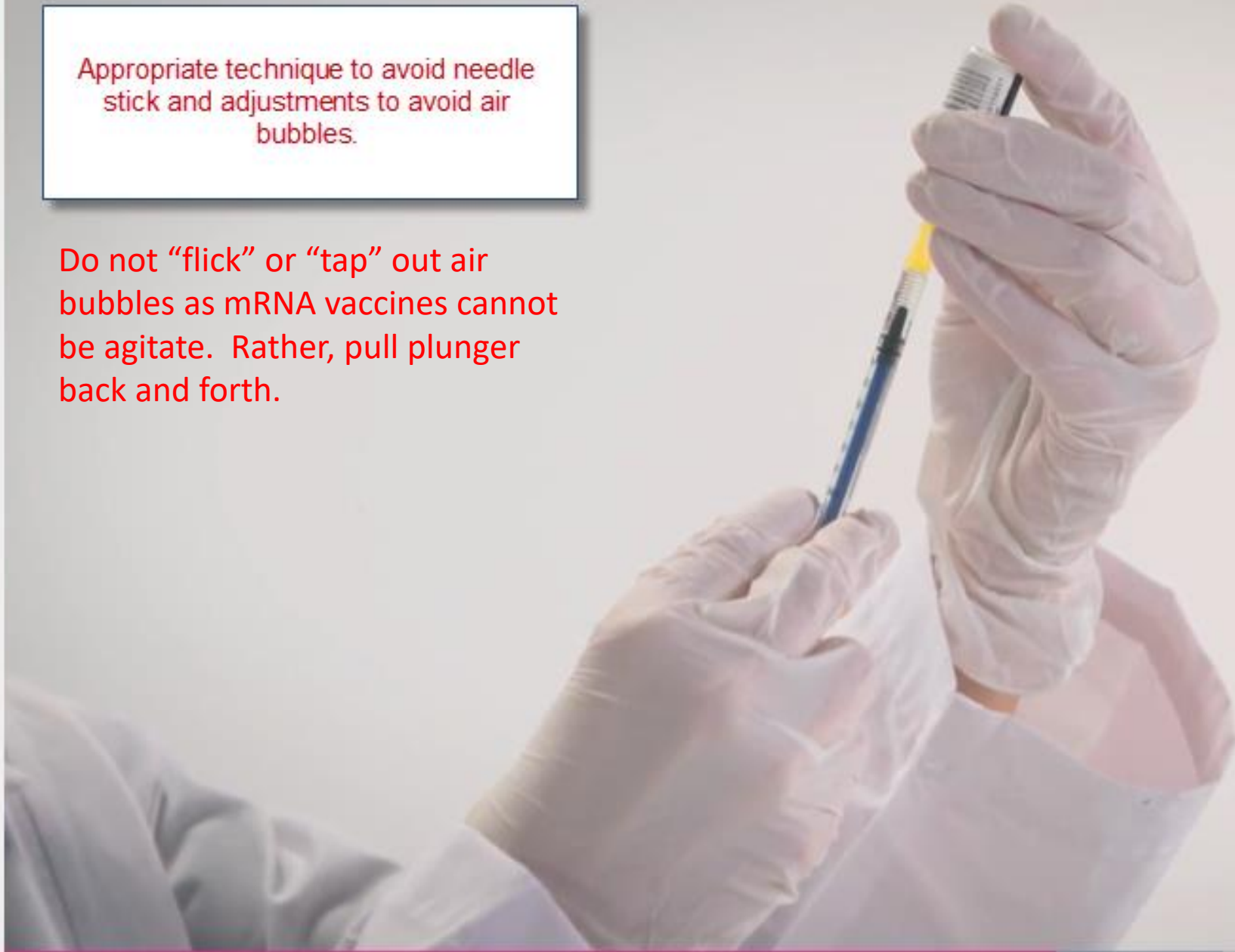


11:03



Appropriate technique to avoid needle stick and adjustments to avoid air bubbles.

Do not “flick” or “tap” out air bubbles as mRNA vaccines cannot be agitated. Rather, pull plunger back and forth.



Visual inspection and ensure syringe
not cold to the touch prior to
administration



7:06

/

11:03



Prepared syringes should be administered **immediately**

Add a 1-hour Beyond-Use time to syringe labels immediately after they are drawn up.



7:11



11:03



Discard vaccine vials that:

- Have been fully discharged and used to administer vaccinations
- Are more than 6 hours from time of dilution

Discard vaccine vials in a sharps container as medical waste to ensure they are permanently destroyed

Discard vial trays as medical waste so they cannot be reused

Only use doses fully drawn from as **SINGLE VIAL**.
DO NOT pool vials for a dose



8:35

/

11:03

